

# FAST

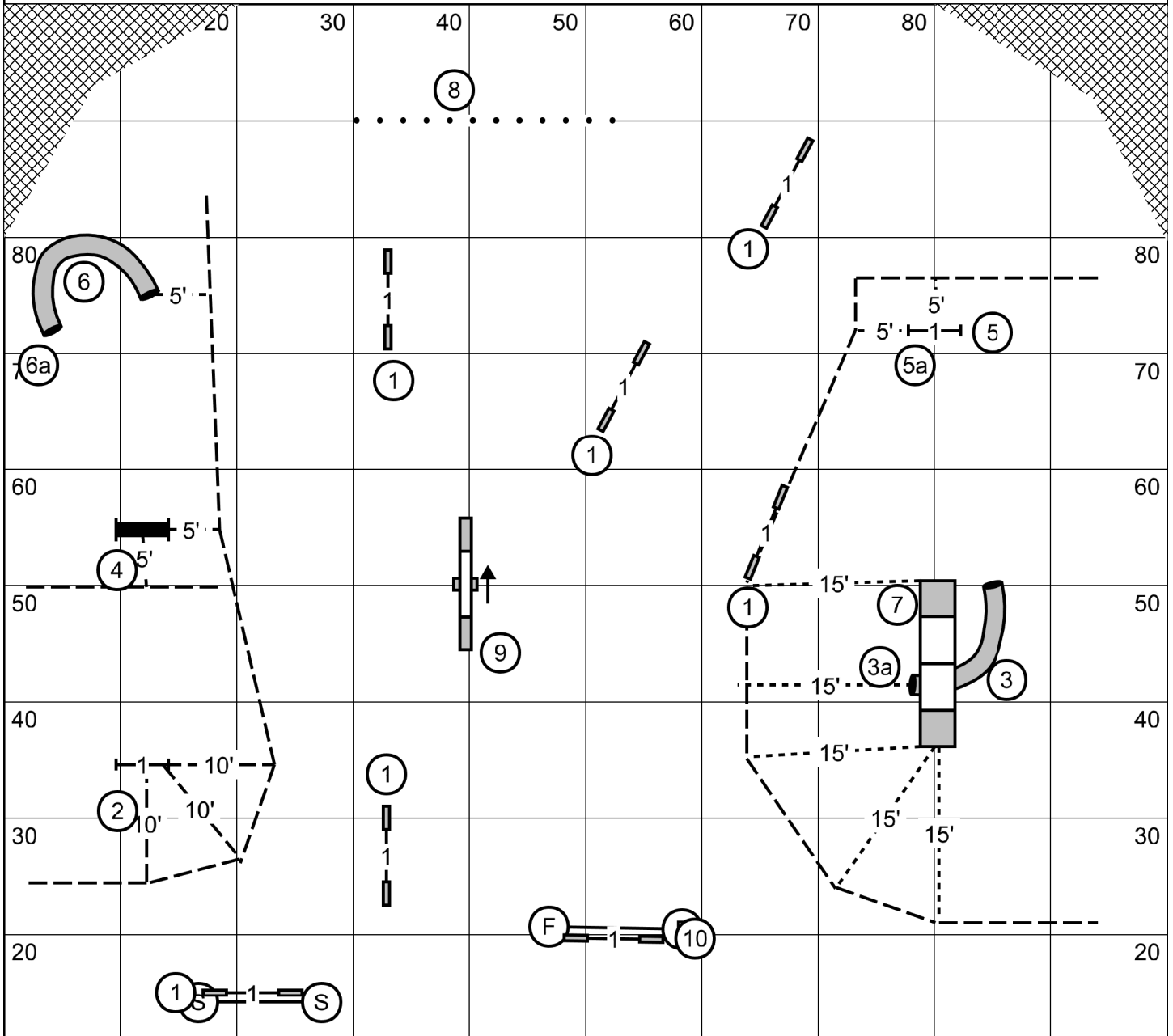
Indoors on artificial turf

**Saturday** 22 June 2024

Potomac Valley Golden Retriever Club

Trial

Judge Blair Kelly



Send is: Ex/M 3a-5a-7, 60 pts (inc send) to Q  
 Op 2-4-6a, 55 pts (inc send) to Q  
 Nv 4-6, 50 pts (inc send) to Q  
 1s, 3, 5, 6, 8 and 10 are bidirectional

T/S

10 60 70 80 90

# Novice JWW

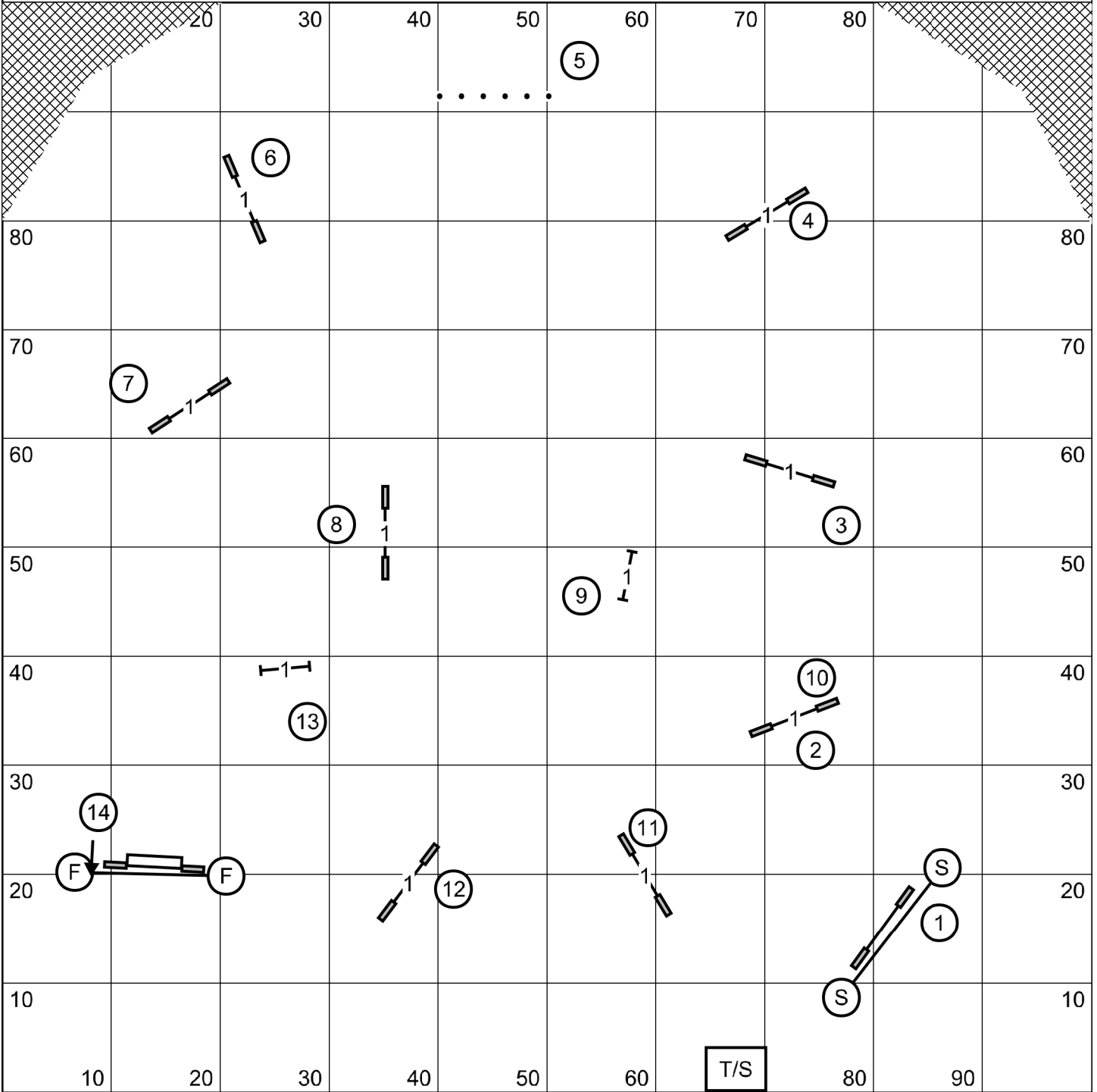
Indoors on artificial turf

**Saturday** 22 June 2024

Potomac Valley Golden Retriever Club

Trial

Judge Blair Kelly



# Open JWW

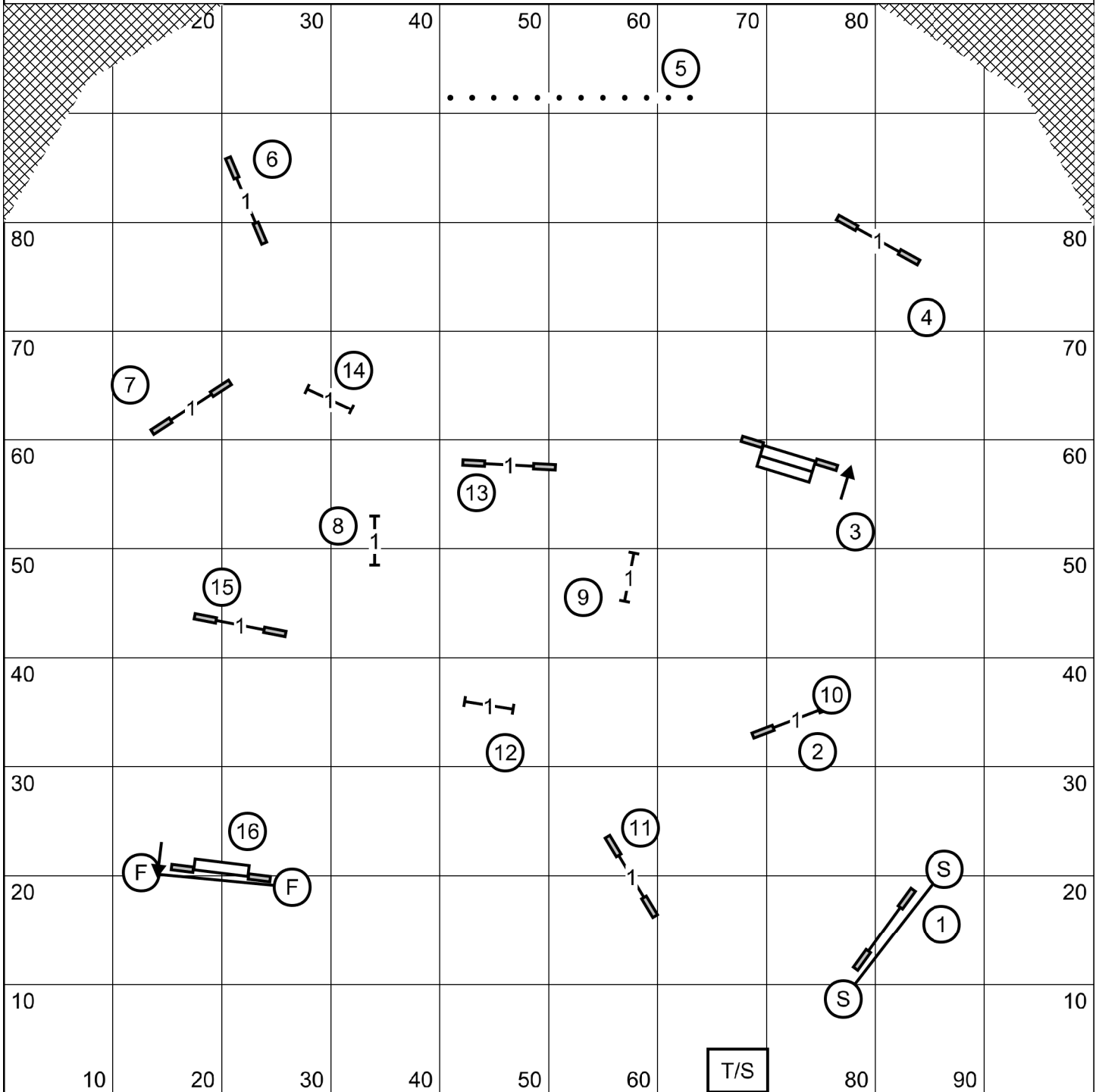
Indoors on artificial turf

Saturday 22 June 2024

Potomac Valley Golden Retriever Club

Trial

Judge Blair Kelly



# Excellent/Masters JWW

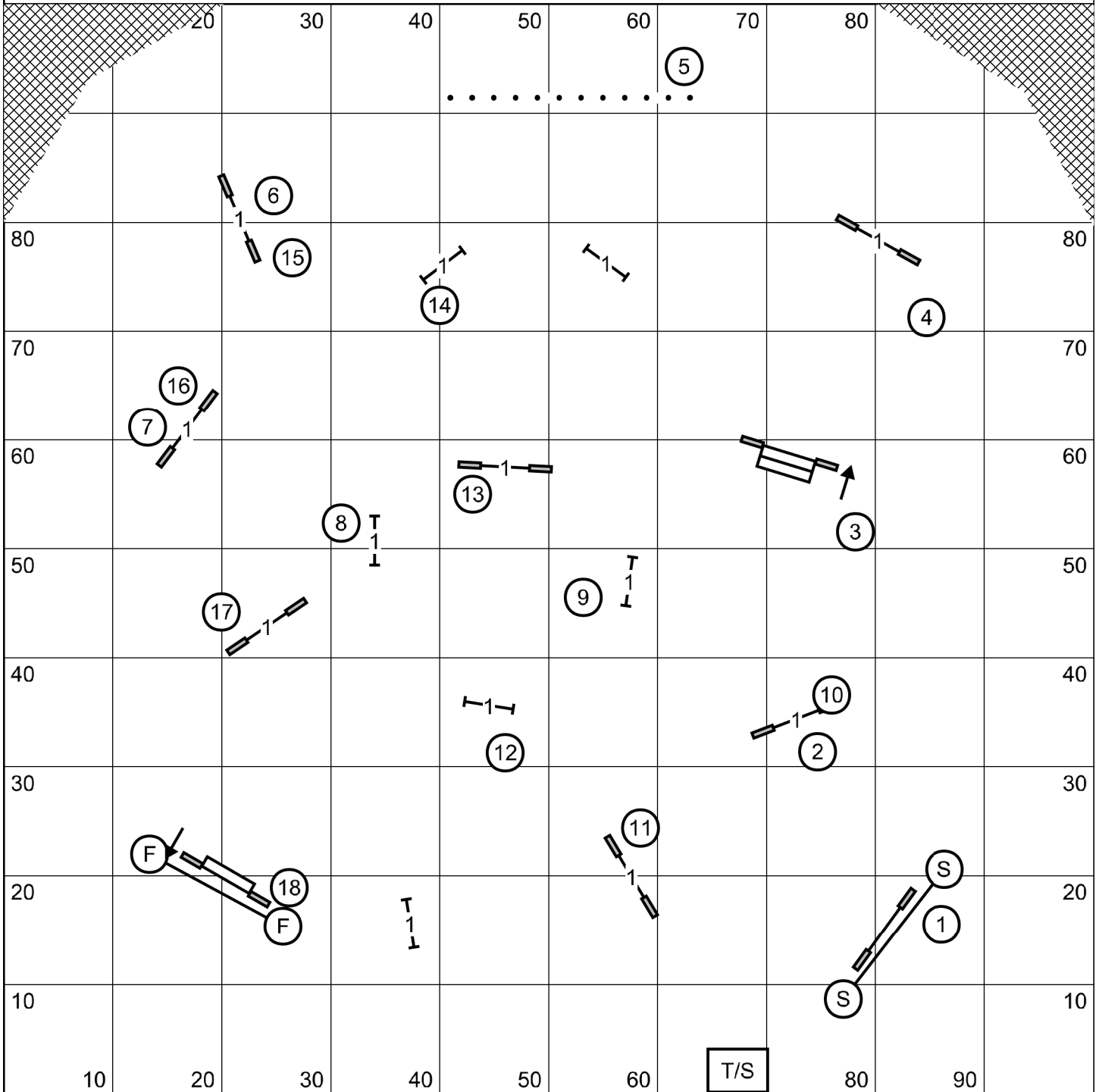
Indoors on artificial turf

**Saturday** 22 June 2024

Potomac Valley Golden Retriever Club

Trial

Judge Blair Kelly



# Novice Standard

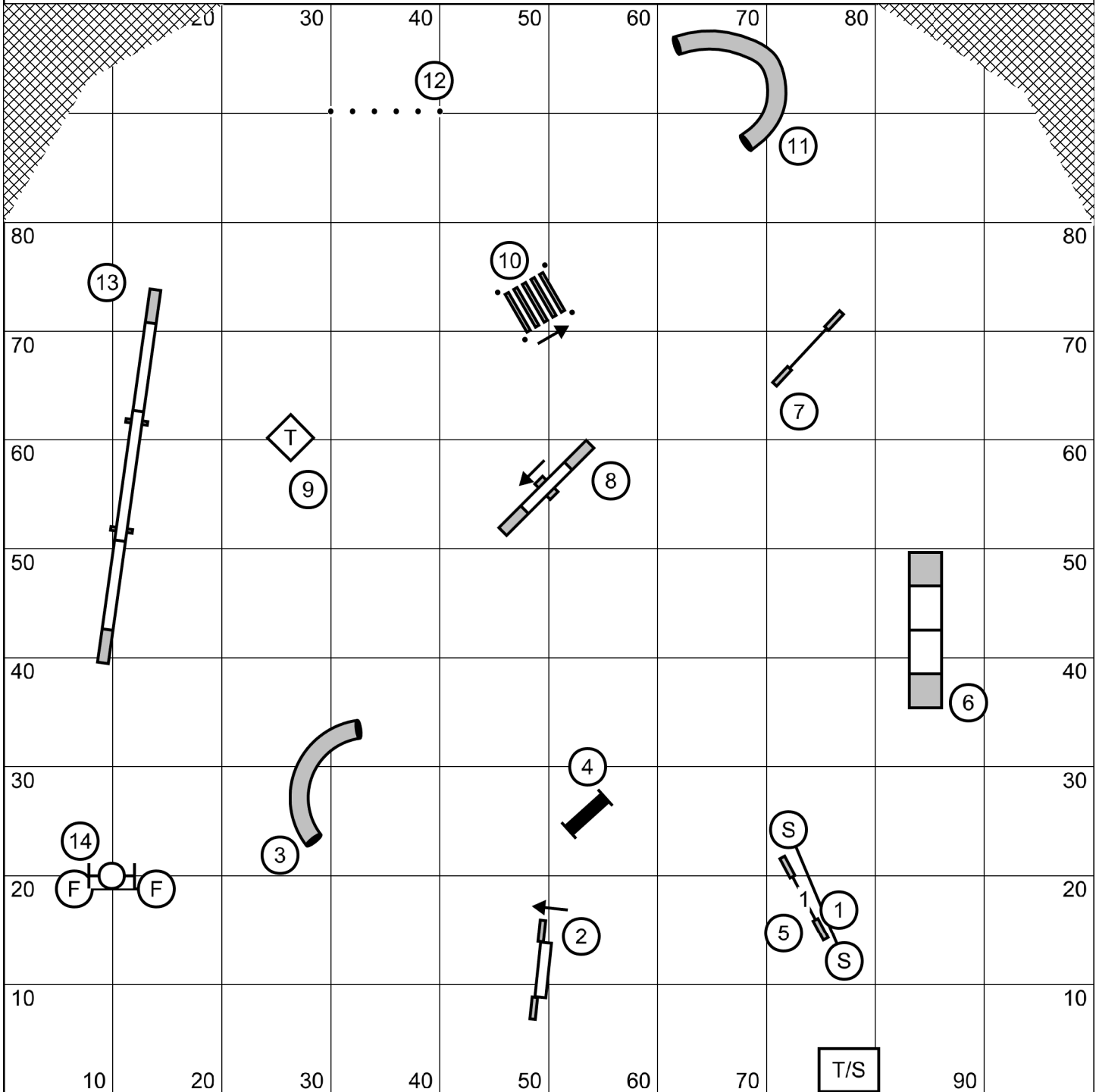
Indoors on artificial turf

Saturday 22 June 2024

Potomac Valley Golden Retriever Club

Trial

Judge Blair Kelly



# Open Standard

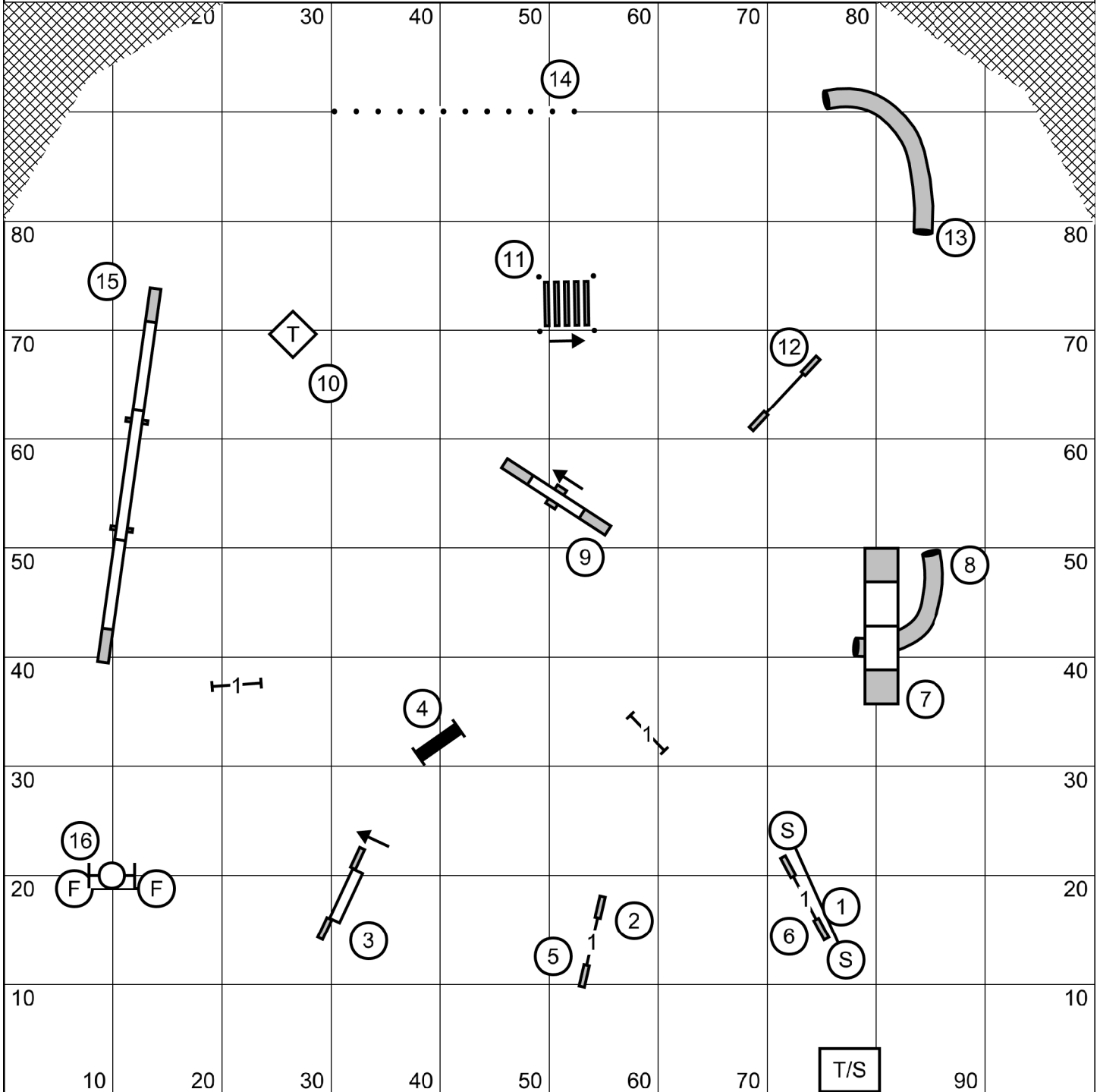
Indoors on artificial turf

Saturday 22 June 2024

Potomac Valley Golden Retriever Club

Trial

Judge Blair Kelly



# Excellent/Master Standard

Indoors on artificial turf

Saturday 22 June 2024

Potomac Valley Golden Retriever Club

Trial

Judge Blair Kelly

